

# IDEAL 4705

## Powerful manual office guillotine with 475 mm cutting length and 70 mm cutting height

SCS - the Safety Cutting System made by IDEAL provides numerous safety features: hinged, transparent safety guard on the front table (locks automatically while cutting); transparent safety cover on the rear table; safety catch (locks blade lever in upper position); safe and convenient blade change from the front without removing machine covers; blade changing device with covered cutting edge; blade depth adjustment from the outside of the machine; cutting stick can be turned or replaced easily from the outside of the machine. Cuts large formats of up to 475 mm in length. 70 mm cutting height. Blade made of German high quality steel. Solid steel blade carrier. Adjustable blade guides made of hardened steel. Solid spindle clamp with hand wheel. Spindle guided backgauge with hand crank. Measuring scale (mm/inches) on front table. Solid all-metal construction. Designed as table top machine, a stand is available as an option (at an extra cost). Dimensions (H x W x D): 590/1270<sup>1</sup> x 1000 x 890 mm, Weight: 85 /93<sup>1</sup> kg (<sup>1</sup> with stand), Colour: pearl grey.

### TECHNICAL DATA

Cutting length	475 mm
Cutting height	70 mm
Narrow cut	30 mm
Table depth	455 mm



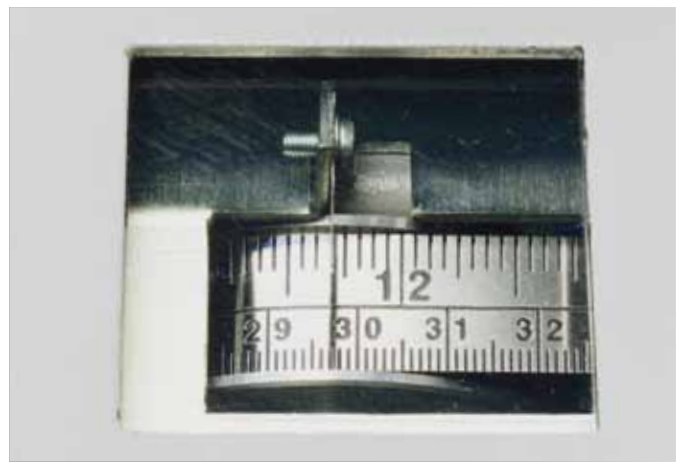
IDEAL 4705 with optional stand

# IDEAL 4705

## Features



**SPINDLE CLAMP** The variable clamp pressure is applied via the hand wheel to both ends of the clamp for firm pressure across the entire cutting line.



**MEASURING SCALE** The precise measuring scale (mm/inches) for the backgauge positioning can be read easily and is located on the front table.



**SAFETY CATCH FOR BLADE** A safety catch locks the blade lever on the manual guillotines in the upper position, for a safe two-hand operation.



**BLADE CHANGING DEVICE** Safe and convenient blade change without removing machine covers: blade changing device with covered cutting edge.

