

ELECTRIC STAPLE REMOVER ERZ-30

MAX

Wish to cleanly remove the staple without struggle?
Reduce your workload of staple removal task with ERZ-30 at your workplace!



Beneficial for the people who frequently remove staples such as Scanning service provider, School, Cram school, Law firm, Accounting firm, Freight forwarder, Government office, Administrative agency and so on...

Up to 30 sheets
(64gsm paper)

Innovative automatic staple removal!

3 benefits of ERZ-30

- 1** Dramatically reduce staple removal time.
- 2** Greatly reduce fatigue of staple removal task.
- 3** Cleanly remove staple with no additional damage to documents.

PRODUCTIVITY IMPROVEMENT

FASTER STAPLE REMOVAL

FASTER SCANNING

Scanning flow



ERZ-30 is regarded 3 times faster than manual remover.

* Internal investigation



Reduce your workload with ERZ-30!!

Conventional manual remover



1 Tough to remove



2 Damage to document



3 Scattered staples

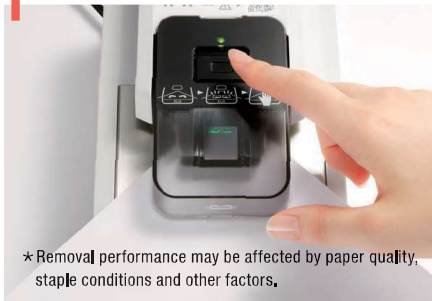


ELECTRIC STAPLE REMOVER

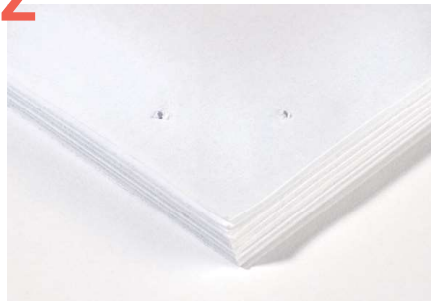
ERZ-30



1 Easy one-press operation



2 Clean removal



3 Easy staple disposal



Align the staple under the LED light and push the button for fast and efficient staple removal from a batch of documents up to 30 sheets with support for various standard size staples.

The staple marks are small with no additional damage or tearing to the documents.

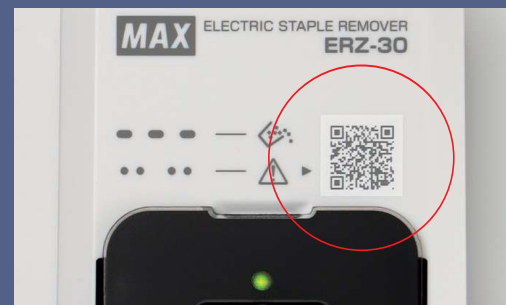
Staple bin can store 500 staples and indicator notifies when it is full.



Specifications

Product Detail	Electric staple remover
Product name	ERZ-30
Capacity	Up to 30 sheets (64gsm)
Removal depth	Max. 27mm from paper edge
Applicable staple type	NO.10, NO.11, NO.3, NO.35, NO.20FE, NO.70FE, NO.110FE, Copier finisher staples
Dimensions / Weight	W126 × D273 × H105 mm / 2 kg
Power source	DC24V, 2.5A Use only specified AC adapter (AC 100-240V, 50-60Hz) appended to machine.
Power consumption	Approx. 60W, 2.5A

Manual from QR code



Simply scan the QR code with your device to get instruction manual.

*QR Code™ is registered trademark of DENSO WAVE INCORPORATED in Japan and other countries.

The specifications and design of the products in this catalogue will be subject to change without advance notice due to our continuous efforts to improve the quality of our products.



MAX CO.,LTD.

6-6,NIHONBASHI,HAKOZAKI-CHO,CHUO-KU,TOKYO,JAPAN
 PHONE: 81-3-3669-8131 FAX: 81-3-3669-7104
 Web: <https://wis.max-ltd.co.jp/int/>

Distributor: