

# PROTOPIC-III 540 SERIES

## PERFECT SOLUTION FOR DIGITAL PRINT ON DEMAND FINISHING LAMINATOR

- Whole functions adjustment with one master dial.
- 13 jobs memory function for automatic adjustment of temperature and speed.
- Super-precise temperature control by temperature sensor installed inside roller.
- Film unwinder and rewinder tension adjustment.

Using household power supply (230V/15A)



### FEATURES

- Exchangeable / Commonized PCB.
- Automatic feeding paper gap adjustment.
- Slide type paper plate - easy to feed the papers.
- High glossy chrome roller with excellent durability.
- Air compressor (with light weight and lower noise) also can be placed in the lami-table with films and consumables.
- Strengthened laminating pressure for more stepped-up bonding power effecting perfect output quality.
- Ergonomic touch screen for enhancing operator-centric convenient control and quality output productivity.
- Air cooling system for perfect photo matting effect (for Dual Photo version).
- Equipped rewinder for various application of sleeing jobs.
- Easy use with cantilever film shaft and bidirectional combi core adaptor.
- Upgraded de-curling device.



AIR COOLING SYSTEM



FILM PERFORATOR



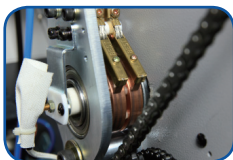
TOUCH PANEL



DECURLING DEVICE



AUTOMATIC FEEDING GAP ADJUSTABLE DEVICE



ROLLER TEMPERATURE SENSOR



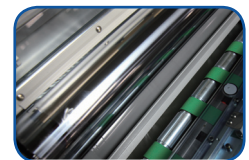
IN-LINE PERFORATOR



CANTILEVER TYPE FILM SHAFT



AIR COMPRESSOR

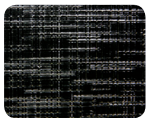


HIGH GLOSSY CHROME ROLLER

## APPLICATIONS

- Posters
- Pop-up Signs
- Menus
- Book covers
- Photograph Albums
- Name cards
- Greetings Cards
- Yearbooks
- Calendars
- Labels
- Magazines
- Packaging
- Leaflets
- Business Brochures and Cards
- Whole page *Sleeking™* (gloss / matt / holographic)
- Spot *Sleeking™* (gloss /matt / holographic / metallic)

## BASIC PATTERNS OF EMBOSING ROLLER (OPTIONAL)



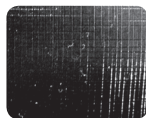
FINE  
TEXTURE



LEATHER  
TEXTURE



SPARKLE  
TEXTURE



SILKY  
TEXTURE



LINEN  
TEXTURE



PHOTO  
TEXTURE

Model Name	PROTOPIC-III 540	PROTOPIC-III 540 DUAL	PROTOPIC-III 540 DUAL PHOTO	PROTOPIC-III 540 DUAL DUPLEX
Dimensions (WxLxH)	800 x 1580 x 670mm	800 x 1770 x 670mm	800 x 1770 x 670mm	800 x 1580 x 670mm
Net Weight	358kg	397kg	397kg	450kg
Laminating Speed	Max. 15m/min	Max. 15m/min	Max. 15m/min	Max. 15(5)m/min
Paper Size (WxL)	Max. 540 x 800mm	Max. 540 x 800mm	Max. 540 x 800mm	Max. 540 x 800mm
Laminating Films	<ul style="list-style-type: none"> <li>• Single Side               <ul style="list-style-type: none"> <li>- Polynex</li> <li>- Perfex</li> <li>- Nylonex</li> </ul> </li> </ul>	<ul style="list-style-type: none"> <li>• Single Side               <ul style="list-style-type: none"> <li>- Polynex</li> <li>- Perfex</li> <li>- Nylonex</li> </ul> </li> </ul>	<ul style="list-style-type: none"> <li>• Single Side               <ul style="list-style-type: none"> <li>- Polynex</li> <li>- Perfex</li> <li>- Nylonex</li> </ul> </li> </ul>	<ul style="list-style-type: none"> <li>• Single Side               <ul style="list-style-type: none"> <li>- Polynex</li> <li>- Perfex</li> <li>- Nylonex</li> </ul> </li> <li>• Double Side               <ul style="list-style-type: none"> <li>- Polynex</li> </ul> </li> </ul>
<i>Sleeking™</i>	Gloss / Matt / Holographic / Metallic	Gloss / Matt / Holographic / Metallic	Gloss / Matt / Holographic / Metallic	Gloss / Matt / Holographic / Metallic
Substrate Thickness	120 ~ 350g/m <sup>2</sup>	120 ~ 350g/m <sup>2</sup>	120 ~ 350g/m <sup>2</sup>	120 ~ 350g/m <sup>2</sup>
Front Roller Diameter	(top) 100mm (bottom) 80mm	(top) 100mm (bottom) 80mm	(top) 100mm (bottom) 80mm	(top) 100mm (bottom) 80mm
Rear Roller Diameter	56mm	55.2mm	55.2mm	56mm
Power Requirements	AC 220 ~ 240V / 14A	AC 220 ~ 240V / 15A	AC 220 ~ 240V / 15A	AC 220 ~ 240V / 24A(15)
Power Consumption	3kw	3.5kw	3.5kw	5.6(3.45)kw
Warm-up Time	5 minutes	10 minutes	5 minutes	10 minutes
Heating System	Infrared Heater	Infrared Heater	Infrared Heater	Infrared Heater
Laminating Temp.	Max. 150°C	Max. 150°C	Max. 150°C	Max. 150°C
Temp. Control	Touch Screen	Touch Screen	Touch Screen	Touch Screen
Speed Control	Touch Screen	Touch Screen	Touch Screen	Touch Screen
Display System	LCD Panel	LCD Panel	LCD Panel	LCD Panel
Pressure Control	Pneumatic cylinder	Pneumatic cylinder	Pneumatic cylinder	Pneumatic cylinder
Film Core Size	77mm (3") / Dual	77mm (3") / Dual	77mm (3") / Dual	77mm (3") / Dual
Cooling Device	Air blower	Air blower	Sub-zero Spot Cooling Device	Air blower
Air Compressor	1HP, 100L/min	1HP, 100L/min	1HP, 100L/min	1HP, 100L/min

GMP reserves the right to change specifications without prior notice.